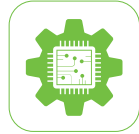


# FULL HEIGHT TURNSTILES GF-4400 Series

GateSet **Industrial Line** GF-4400 Series Full Height Turnstiles are built to control pedestrian access in areas requiring high level of security. Designed to meet the expectations of the industrial world, GF-4400 Series stand out with features such as Invalid Passenger Sensor and Manual Override Box; rendering it compliant to industry-specific standards, for example HCIS. The modular structure of GF-4400 Series provides easy handling of logistics both in transportation and installation stages.

IndustrialLineGF-4400Datasheet v.2.0

## Functional Highlights



Electromechanical



Bidirectional



Indoor/Outdoor



Security / Comfort



30 Passages / min

## Usage Areas

Access Control

Factories  
Prisons  
Military Compounds  
Embassies  
Airports  
Parking Lots  
Industrial Areas

## Featured Characteristics

Robust

Designed to withstand hard environmental conditions such as heavy rains, dust, wind and cold

Compact

Smaller case design compared to its predecessors provide high security while saving space

Modular

Demounted packing provides ease of transport along with easy assembly

Flexible

Ease of integration with various access control systems thanks to its high-end PLC, which answers all demanded high-end functions

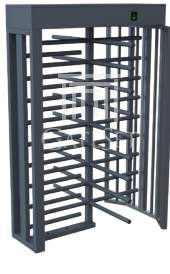
Above the Line

Fully meets the requirements of industrial realm, such as compliance with standards such as HCIS

## Products in this Series

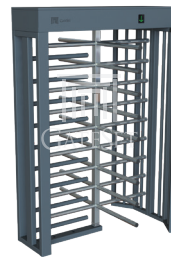
GF-4400

- Main Body and Frame:  
Powder Coated
- Arms and Rotor:  
Powder Coated
- RAL Color Options Available:  
6018, 5002, 7001,  
7040, 7032
- Recommended For:  
\* Indoor - Low Moist Outdoor



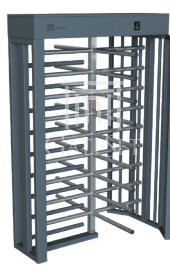
GF-4420

- Main Body and Frame:  
Powder Coated
- Arms and Rotor:  
304 Grade Stainless Steel
- RAL Color Options Available:  
6018, 5002, 7001,  
7040, 7032
- Recommended For:  
\* Indoor - Moist Outdoor



GF-4430

- Main Body and Frame:  
Powder Coated
- Arms and Rotor:  
316 Grade Stainless Steel
- RAL Color Options Available:  
6018, 5002, 7001,  
7040, 7032
- Recommended For:  
\* Indoor - Very Moist and  
Highly Corrosive Outdoor



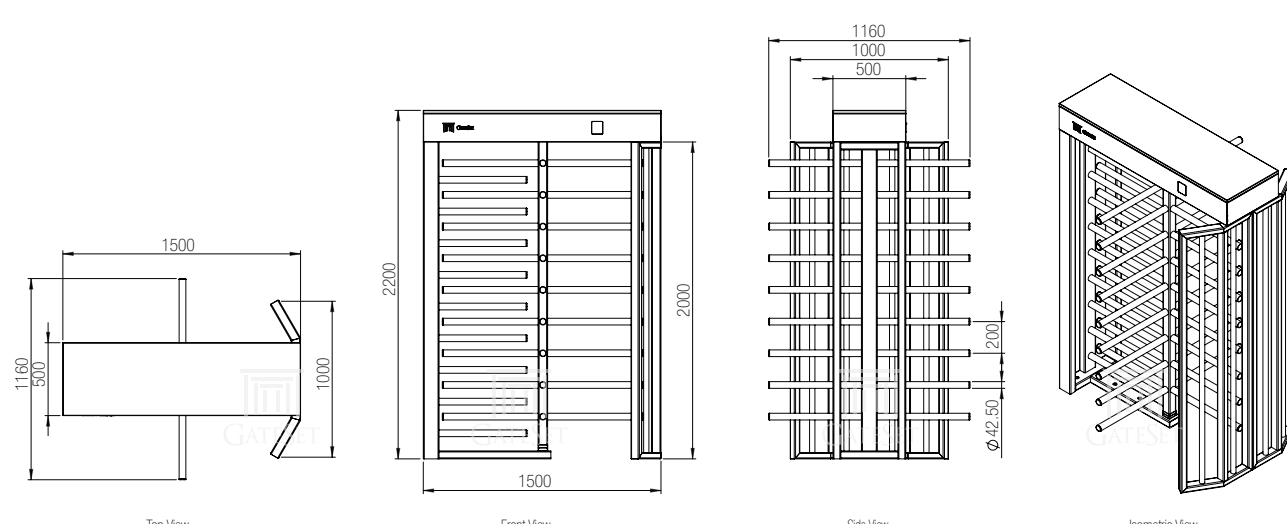
GF-4440

- Main Body and Frame:  
304 Grade Stainless Steel  
Satin Finishing
- Arms and Rotor:  
304 Grade Stainless Steel
- RAL Color Options Available:  
6018, 5002, 7001,  
7040, 7032
- Recommended For:  
\* Indoor - Moist Outdoor



IndustrialLineGF-4400Datasheet v.2.0

## Drawings and Dimensions



## Technical Specifications

MATERIAL - MAIN BODY

GF-4400 / GF-4420 / GF-4430 Electrostatic Powder Coating on Steel with Anti-Rust Layer

MATERIAL - ROTATING ARMS

GF-4440: 304 Stainless Steel - Satin Finishing

GF-4400: Electrostatic Powder Coating on Steel

GF-4420 / GF-4440: 304 Stainless Steel Polished Finishing

GF-4430: 316 Stainless Steel Polished Finishing

All other parts are coated against corrosion

1500 x 1160 x 2200 (WxLxH)

DIMENSIONS (mm)

PASSAGE WIDTH (mm)

620

ARM LENGTH (mm)

550

OPERATING VOLTAGE

220V / 50Hz

NOMINAL / MAX. CURRENT

250 mA / 850 mA

POWER CONSUMPTION

30 W

OPERATING TEMPERATURE

-20 °C / + 70 °C

ACCESS CONTROL

PLC based control for granting access. Easy integration with all kind of access control equipment

POSITION DETECTION

Position detection with two separate micro-switches at mechanics

PASSAGE ACKNOWLEDGMENT

Provided by 4 pieces of optical passage sensors controlled with PLC (optional)

WARNING INDICATORS

Two separate warning indicators at front and rear sides of the gate.

Green arrow indicates "Passage Open", Red cross indicates "Passage Closed"

Passage indication with Top Panel LEDs placed both at entry and exit sides.

Green for passage free, Red for passage blocked, Blue for standby (optional)

4 different operational modes available, programmed by means of software

Unidirectional and Bidirectional operation features as "Only Entrance",

"Only Exit", "Entrance and Exit"

Self centered and smooth operation by means of spring and hydraulic damper

Handling more than 30 passengers per minute

Modular design provides ease of transportation and installation as well as easy part replacement

Electrical and mechanical safety for all components, To avoid injuries,

all corners and sides are rounded

Entry and Exit Manual Override option with locked switch (optional)

Main mechanism released and unlocked automatically. Arms rotates free.

ISO 9001:2015, CE

2 Years

MANUAL OVERRIDE

ELECTRICAL FAILURES

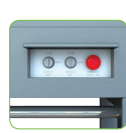
CERTIFICATION

WARRANTY

\* Subject to change depending on design or project needs without prior notice

IndustrialLineGF-4400Datasheet v.2.0

## Optional Features



### Manual Override Box

Placed at the secure side of the roof within a locked compartment, Manual Override Box provides ease of passage mode configuration for authorized security personnel. Available optionally, this feature comes as default in "-T" configuration



### Passage Tracking Sensors

In order to acknowledge physical passage of the user, passage tracking feature is provided with passage sensors, which are located at 4 different points through the passage. Available optionally, this feature comes as default in "-T" configuration

## Optional Accessories



### Top Panel LED Lighting

A more visible passage indication is provided with LED Lights placed both at entry and exit sides.



### Top Panel Spot Light

For remote areas with low or no illumination, passage enlightenment is available with Spot Lights



### Stand Alone Card Reader

For sites without Access Control System, different types of stand-alone card readers are available.



### Button Control Unit

Designed for guard rooms, provides ease of operation for security personnel.

## Finishing Options

Optional

304 Stainless Steel, Satin Finishing for Body, Polished Finishing for Arms and Rotor

Optional

316 Grade Stainless Steel, Polished Finishing (Only available for Arms and Rotor)

Optional

Powder Coating with Anti-Rust Layer and Heat Treatment (RAL Colours Available)